



PORTMARNOCK  
RESORT

---

JAMESON GOLF LINKS

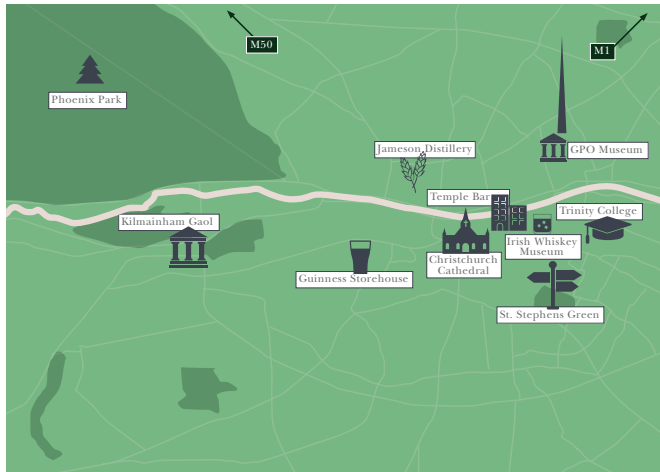
MEETINGS & EVENTS



# LOCATION



Tucked away in a quiet corner of ‘The Velvet Strand’, one of Ireland’s most stunning stretches of uninterrupted coastline – the historic Portmarnock Resort & Jameson Golf Links, once the family home of the Jameson Dynasty awaits.



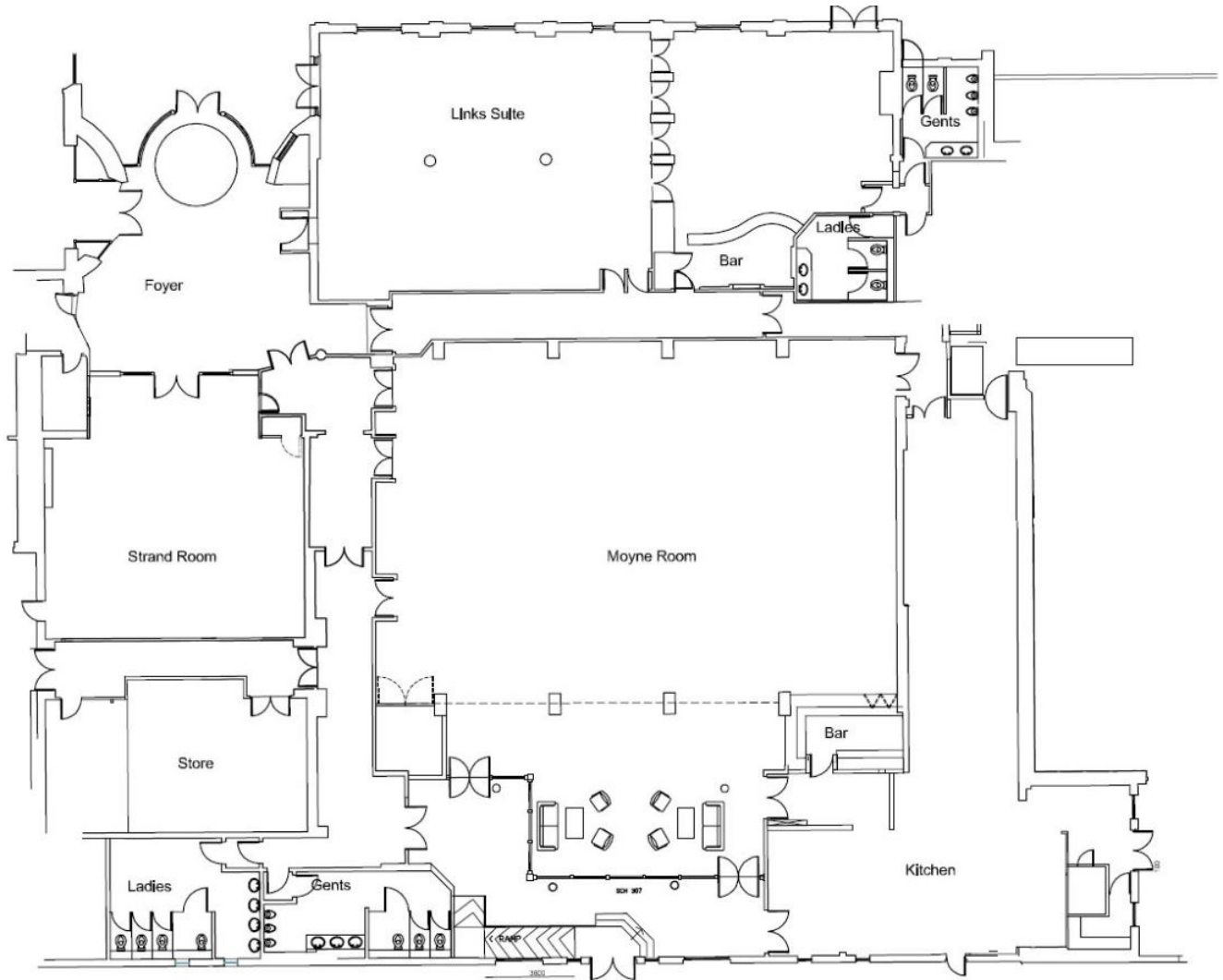
All major Dublin attractions are located within 35 minutes or less from the resort when travelling by car.



Dublin Airport is just a 15-minute drive from the resort with Dublin City less than 30 minutes journey.

**Free on-site parking is available**

# GROUND FLOOR





# MOYNE SUITE

The largest of the meeting rooms with a maximum capacity of 300 delegates theatre style.



HDMI LCD projector and screen included

3 Phase power (if required)

Complimentary WIFI

Air-conditioning

Length & Width 21m x 13 m

Height 3.2m

**Theatre 300 | Classroom 150 | U-shape 65 | Boardroom 40 | Cabaret 140 | Reception/Bufferet 250 | Banquet 220**



# LINKS SUITE I & II

Located on the ground floor of the hotel beside the Jameson House entrance.



HDMI LCD projector and screen included

3 Phase power (if required)

Complimentary WIFI

Air-conditioning

Length & Width 12m x 10.5 m

Height 2.7m

**Theatre 90 | Classroom 50 | U-shape 40 | Boardroom 40 | Cabaret 60 | Reception/Bufferet 100 | Banquet 70**



# STRAND SUITE

This fully flexible room can be set up in a range of styles from theatre to cabaret style.  
Located on the ground floor of the hotel.



Inbuilt LCD projector and screen

Desktop connectivity

Complimentary WIFI

Air-conditioning

Length & Width 10.6m x 10.5 m

Area & Height 105sqm x 2.7m

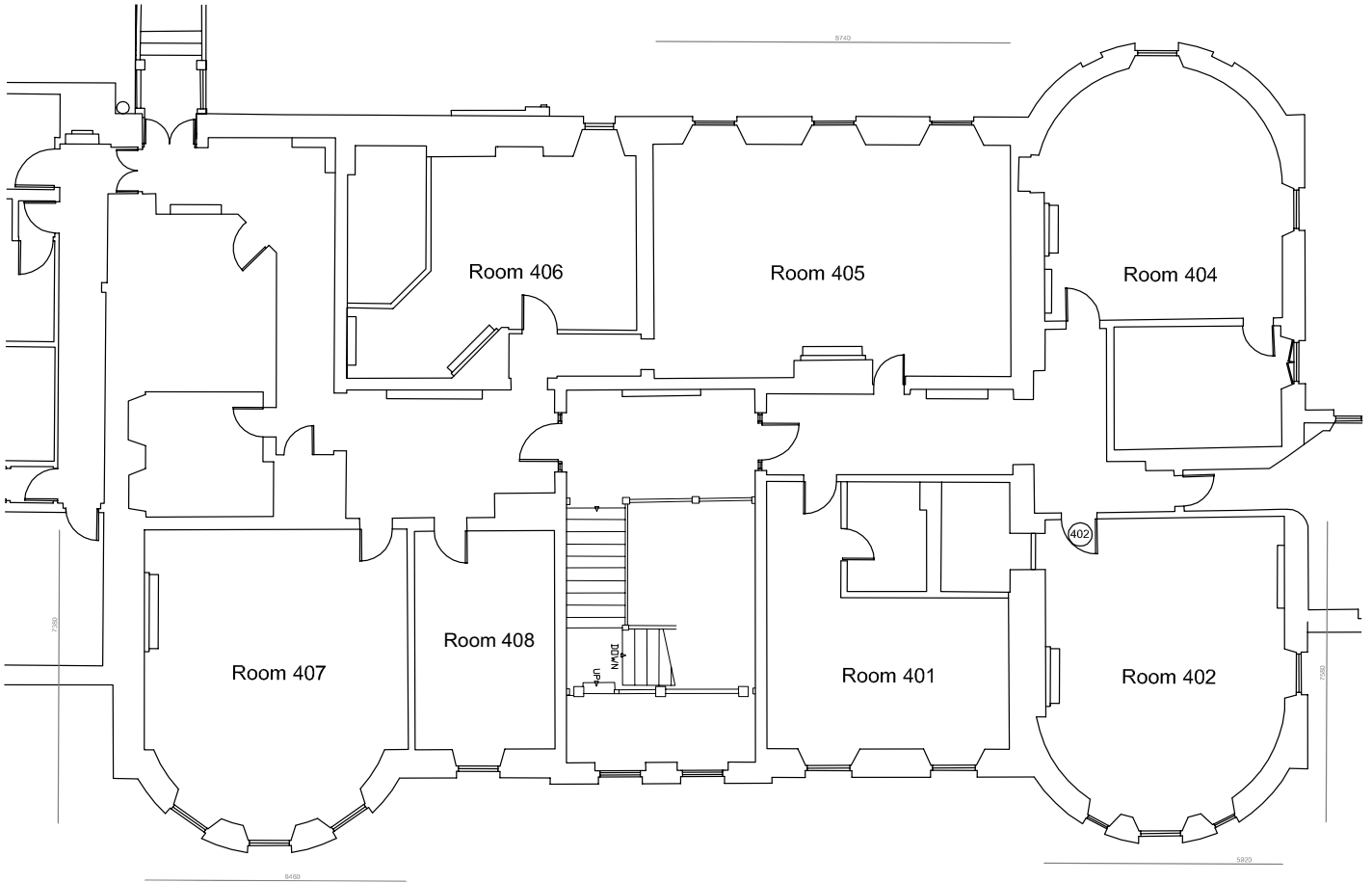


**Theatre 60 | Classroom 35 | U-shape 30 | Boardroom 20 | Cabaret 24 | Reception/Buffer 50 | Banquet 40**





# FIRST FLOOR





# CAPTAIN SAUL SUITE

Suite 402 also known as The Captain Saul and has recently been refurbished.



80 inch format high definition commercial display with HDMI & VGA connectivity

Desktop connectivity

Full HD Presentation capabilities

Complimentary WIFI

Air-conditioning

Length & Width 7.3m x 5.8m

Area & height 42.3sqm x 3.3m

**Boardroom capacity - 12**



# AMY JOHNSON SUITE

Suite 405 also known as the Amy Johnson.



84 inch format high definition commercial display with HDMI & VGA connectivity

Remote Desktop connectivity

Full HD Presentation capabilities

Complimentary WIFI

Air-conditioning

Length & Width 8.8m x 5.02m

Area & height 44.2qm x 3.3m

**Classroom 15 | U-shape 16 | Boardroom 16**



# EDWARD VII SUITE

Suite 407 also known as The Edward VII.



50 inch format high definition commercial display with HDMI & VGA connectivity

Desktop connectivity

Full HD Presentation capabilities

Complimentary WIFI

Air-conditioning

Length & Width 7.3m x 6.4m

Area & height 46.7sqm x 3.3m

**Boardroom 12 | Reception/Buffer 10**





# THE SPA

Offering a unique combination of tranquil ambience and indulgent treatments.



The Spa at Portmarnock provides a serene escape by the shores of the Velvet Strand. Relax and rejuvenate with our range of treatments, ideal for pre and post-conference relaxation. Our tranquil atmosphere offers a peaceful break for busy delegates. Let our experts guide you to the perfect experience tailored to your needs.

**Open 7 days a week from 10am to 6pm (subject to change), our last treatment booking is 5pm**



# TEAM BUILDING

Excellent team-building facilities are rare to find in Dublin which is why we are one of the top team-building facilities in Dublin.



## **Onsite**

With the famous Portmarnock Beach on our doorstep and conference venue facilities as well as meeting rooms, our hotel makes an ideal team-building venue. On the hotel's resort grounds, at the end of our golf course, we have a green area that can be used as an exclusive area for outdoor activities, team building & games.

## **Off Site**

Only a quick 5-minute drive away lies Gannon Park Malahide F.C. Portmarnock Hotel & Golf Links collaborates with Xtreme and Dynamic event companies, who can cater to all your team building needs.



# DINING OPTIONS

Explore a diverse selection of conference dining options curated by our experienced banqueting team.



Indulge in themed breaks and a variety of lunch and private dining options tailored to enhance your meeting or corporate event.

**Options include:**

Themed Break Menus

Private Plated Dinner

Private Plated Lunch

Canapés

BBQ Buffet

For menus & enquiries, please contact our Sales Team on +353 (0)1 866 6524 or email [events@portmarnock.com](mailto:events@portmarnock.com)





PORTMARNOCK  
RESORT

---

JAMESON GOLF LINKS

Get in touch today to hear what we can offer you.

Contact our our dedicated events team on [events@portmarnock.com](mailto:events@portmarnock.com) or call +353 (0)1 866 6524

[www.portmarnock.com/meetings](http://www.portmarnock.com/meetings)

